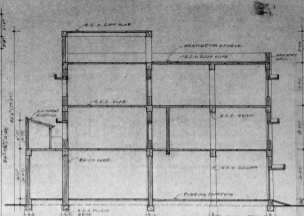
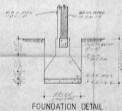


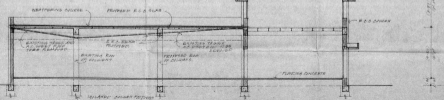
FIRST FLOOR PLAN OF THE FLOUR MILL



SECTION B-B



FOUNDATION DETAIL



SECTION A-A OF THE ROLLER FLOUR MILL

AREA STATEMENT	
FLOOR MILL -	12000.00 (40' x 30')
GROUND FLOOR -	12000.00 (40' x 30')
FIRST FLOOR -	4000.00 (40' x 10')
SECOND FLOOR -	7000.00 (40' x 17.5')
THIRD FLOOR -	3000.00 (40' x 7.5')
FOURTH FLOOR -	2000.00 (40' x 5')

TOTAL AREA - 36000.00 (40' x 90')

NET AREA - 32000.00 (40' x 80')

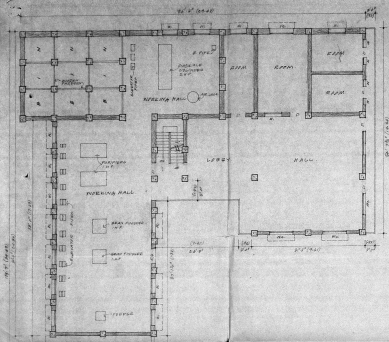
APPROVED  
 S. S. S. S. S.  
 S. S. S. S. S.  
 S. S. S. S. S.  
 S. S. S. S. S.

TITLE  
 PLAN SHOWING THE PROPOSED ROOF CHANGE IN THE EXISTING FACTORY BUILDING FOR MAHALAKSHMI ROLLER FLOUR MILLS IN R.S. NO 3900/11 PART AND 3905/12 PART AT DOOR NO 10 BULLAYA MISTRY STREET, ELDER NO 11 TONDIAK PET. MADRAS - 600081. WITH 156 HP INSTALLATION.

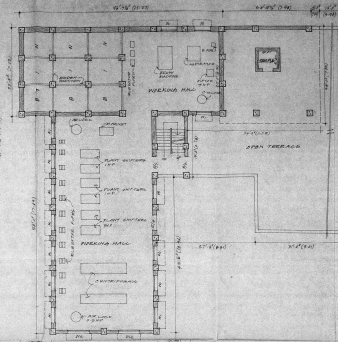
DRAWN BY  
 LICENSED SURVEYOR  
 K. VENKATAPAL  
 100

OWNER  
 Mohan Lal.

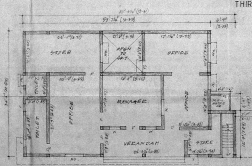




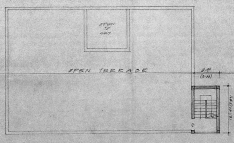
SECOND FLOOR PLAN OF THE FLOUR MILL



THIRD FLOOR PLAN OF THE FLOUR MILL



GROUND FLOOR PLAN OF OFFICE BLOCK



TERRACE PLAN

SCHEDULE OF JOBBY

NO.	DESCRIPTION	QUANTITY	UNIT	ESTIMATED COST
1.	T.M. WINDOW	12	1' 0" x 4' 0"	(12) x 1000 = 12000
2.	T.M. WINDOW	12	4' 0" x 4' 0"	(12) x 1500 = 18000
3.	T.M. WINDOW	12	6' 0" x 4' 0"	(12) x 2000 = 24000
4.	T.M. WINDOW	12	8' 0" x 4' 0"	(12) x 2500 = 30000
5.	T.M. WINDOW	12	10' 0" x 4' 0"	(12) x 3000 = 36000
6.	T.M. WINDOW	12	12' 0" x 4' 0"	(12) x 3500 = 42000
7.	T.M. WINDOW	12	14' 0" x 4' 0"	(12) x 4000 = 48000
8.	T.M. WINDOW	12	16' 0" x 4' 0"	(12) x 4500 = 54000
9.	T.M. WINDOW	12	18' 0" x 4' 0"	(12) x 5000 = 60000
10.	T.M. WINDOW	12	20' 0" x 4' 0"	(12) x 5500 = 66000
11.	T.M. WINDOW	12	22' 0" x 4' 0"	(12) x 6000 = 72000
12.	T.M. WINDOW	12	24' 0" x 4' 0"	(12) x 6500 = 78000
13.	T.M. WINDOW	12	26' 0" x 4' 0"	(12) x 7000 = 84000
14.	T.M. WINDOW	12	28' 0" x 4' 0"	(12) x 7500 = 90000
15.	T.M. WINDOW	12	30' 0" x 4' 0"	(12) x 8000 = 96000
16.	T.M. WINDOW	12	32' 0" x 4' 0"	(12) x 8500 = 102000
17.	T.M. WINDOW	12	34' 0" x 4' 0"	(12) x 9000 = 108000
18.	T.M. WINDOW	12	36' 0" x 4' 0"	(12) x 9500 = 114000
19.	T.M. WINDOW	12	38' 0" x 4' 0"	(12) x 10000 = 120000
20.	T.M. WINDOW	12	40' 0" x 4' 0"	(12) x 10500 = 126000
21.	T.M. WINDOW	12	42' 0" x 4' 0"	(12) x 11000 = 132000
22.	T.M. WINDOW	12	44' 0" x 4' 0"	(12) x 11500 = 138000
23.	T.M. WINDOW	12	46' 0" x 4' 0"	(12) x 12000 = 144000
24.	T.M. WINDOW	12	48' 0" x 4' 0"	(12) x 12500 = 150000
25.	T.M. WINDOW	12	50' 0" x 4' 0"	(12) x 13000 = 156000
26.	T.M. WINDOW	12	52' 0" x 4' 0"	(12) x 13500 = 162000
27.	T.M. WINDOW	12	54' 0" x 4' 0"	(12) x 14000 = 168000
28.	T.M. WINDOW	12	56' 0" x 4' 0"	(12) x 14500 = 174000
29.	T.M. WINDOW	12	58' 0" x 4' 0"	(12) x 15000 = 180000
30.	T.M. WINDOW	12	60' 0" x 4' 0"	(12) x 15500 = 186000
31.	T.M. WINDOW	12	62' 0" x 4' 0"	(12) x 16000 = 192000
32.	T.M. WINDOW	12	64' 0" x 4' 0"	(12) x 16500 = 198000
33.	T.M. WINDOW	12	66' 0" x 4' 0"	(12) x 17000 = 204000
34.	T.M. WINDOW	12	68' 0" x 4' 0"	(12) x 17500 = 210000
35.	T.M. WINDOW	12	70' 0" x 4' 0"	(12) x 18000 = 216000
36.	T.M. WINDOW	12	72' 0" x 4' 0"	(12) x 18500 = 222000
37.	T.M. WINDOW	12	74' 0" x 4' 0"	(12) x 19000 = 228000
38.	T.M. WINDOW	12	76' 0" x 4' 0"	(12) x 19500 = 234000
39.	T.M. WINDOW	12	78' 0" x 4' 0"	(12) x 20000 = 240000
40.	T.M. WINDOW	12	80' 0" x 4' 0"	(12) x 20500 = 246000
41.	T.M. WINDOW	12	82' 0" x 4' 0"	(12) x 21000 = 252000
42.	T.M. WINDOW	12	84' 0" x 4' 0"	(12) x 21500 = 258000
43.	T.M. WINDOW	12	86' 0" x 4' 0"	(12) x 22000 = 264000
44.	T.M. WINDOW	12	88' 0" x 4' 0"	(12) x 22500 = 270000
45.	T.M. WINDOW	12	90' 0" x 4' 0"	(12) x 23000 = 276000
46.	T.M. WINDOW	12	92' 0" x 4' 0"	(12) x 23500 = 282000
47.	T.M. WINDOW	12	94' 0" x 4' 0"	(12) x 24000 = 288000
48.	T.M. WINDOW	12	96' 0" x 4' 0"	(12) x 24500 = 294000
49.	T.M. WINDOW	12	98' 0" x 4' 0"	(12) x 25000 = 300000
50.	T.M. WINDOW	12	100' 0" x 4' 0"	(12) x 25500 = 306000

TITLE  
 PLAN SHOWING THE PROPOSED REEF CHANGE IN THE EXISTING FACTORY BUILDING FOR MAHALAKSHMI ROLLER FLOUR MILL IN R.S. NO 3402/11 PART AND 3402/12 PART AT DOOR NO 19 BELLAYA MUDALI STREET, BLOCK NO 79, TONDIAKPET, MADRAS-600081 WITH B.S.S.H.P. INSTALLATION

SHEET NO 3  
 LICENSED SURVEYOR  
 K. VENUGOPAL  
 REGISTERED SURVEYOR  
 LICENSE NO. 100/1984  
 REGISTERED SURVEYOR  
 LICENSE NO. 100/1984  
 REGISTERED SURVEYOR  
 LICENSE NO. 100/1984

OWNER  
 (Signature)

